

Census 2000 DVD: Summary File (SF) 1

The Bureau of the Census adopted "Allocate" software for the Census 2000 DVD/CD-ROM products. Allocate is intended for experienced data users, and others who must download large amounts of information. American FactFinder at <http://factfinder.census.gov> is probably a better choice for novice data users. [Click here](#) for a description of American FactFinder and selected tutorials. The chart below summarizes other differences between the Census 2000 DVDs/CD-ROMs and FactFinder.

Census DVD/CD-ROM (Allocate Software) v. American FactFinder

DVD/CD-ROM (Allocate Software)	American FactFinder
Data release is often delayed.	Data are released much quicker than the DVD/CD-ROM products.
Once you are familiar with the software, most data is just a click away. Changing geographies and subject variables is far easier than with FactFinder.	Users can change geographies and subject variables, but this process is far more cumbersome than with the DVD/CD-ROM products.
Users have many options for selecting subject variables. That is, when compiling information about race, one can extract statistics for the White population.	Options for selecting subject variables are more limited than with the DVD/CD-ROM. For example, when compiling information about race, one cannot extract statistics for the White population. Users must include data for all races.
Download data in comma delimited; Access; dBASE III, IV, or V; Paradox; FoxPro; Excel; or html formats.	FactFinder limits downloading formats to comma delimited; tab delimited; and comma delimited zip formats.
The Radii feature lets users view data within the specified radius of a given point.	FactFinder does not have a comparable feature.

Inquire about using the Census 2000 DVDs/CD-ROMs at the Business and Government Documents Reference Center, Lockwood Library. (645-2821)

This guide describes the basics of Allocate using Summary File 1 as an example.

What is Summary File 1?

Summary File 1 covers basic demographic characteristics asked of the entire population. Variables include age; sex; race; Hispanic origin; household relationships; tenure (home owner or renter); and vacancy characteristics.

More detailed socioeconomic variables, such as income; education; value of housing and labor force status are part of Summary File 3.

How to use the SF 1 DVD

Figure 1 illustrates the opening menu. Select "Launch" to start the program.

Figure 1
SF1 DVD Opening Menu

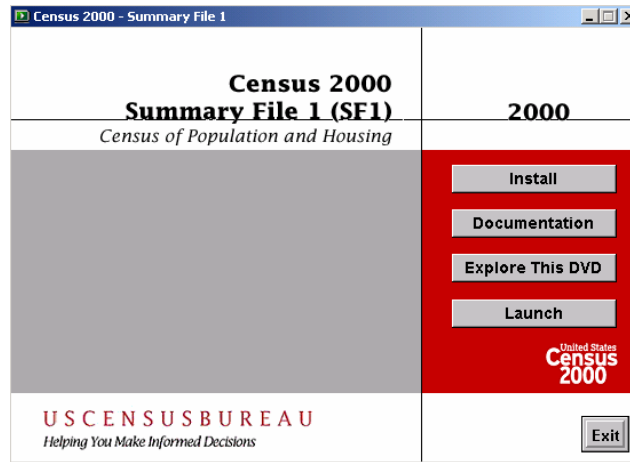
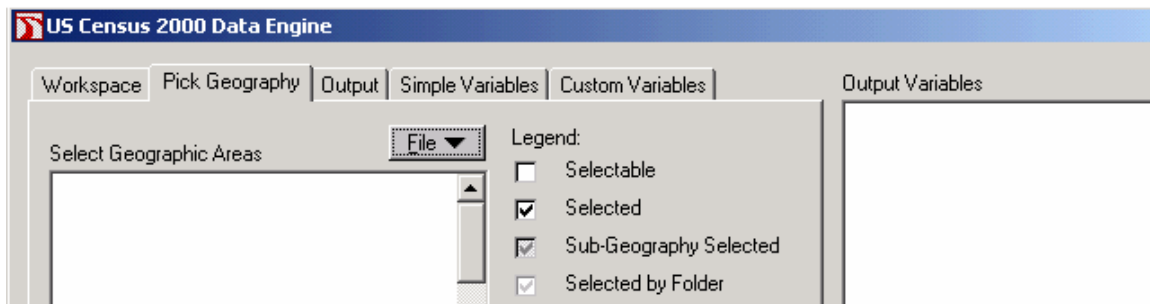


Figure 2 illustrates options for working with saved files (Workspace); selecting geographies; selecting output formats; selecting simple variables; and creating custom variables.

Figure 2
Options for creating tables



Do three things when answering census questions: 1) select geograph(ies); 2) select subject(s); and 3) merge the geograph(ies) and subjects into tables.

Selecting geographies

Arrangement of geographies is hierarchical. Click the plus (+) adjacent to "040-State" in figure 3 to list all states.

Figure 3
Selecting Geographies Part 1

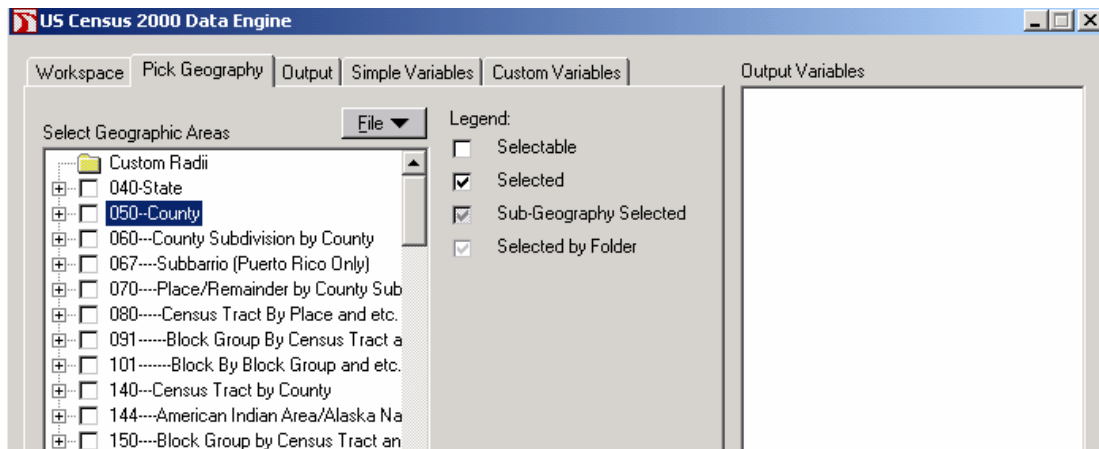
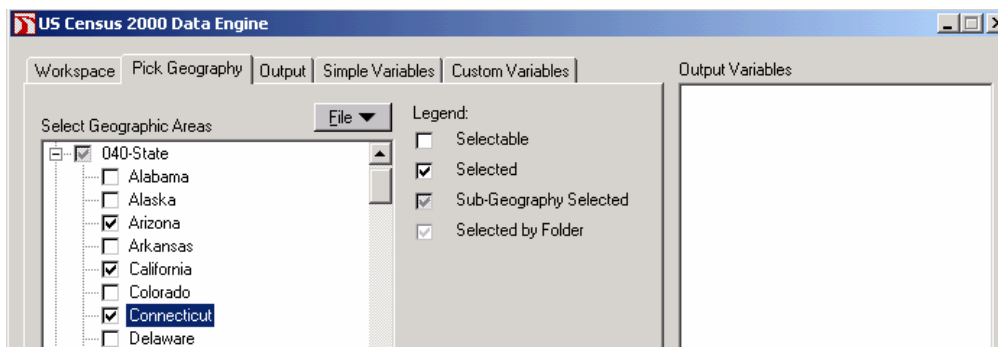


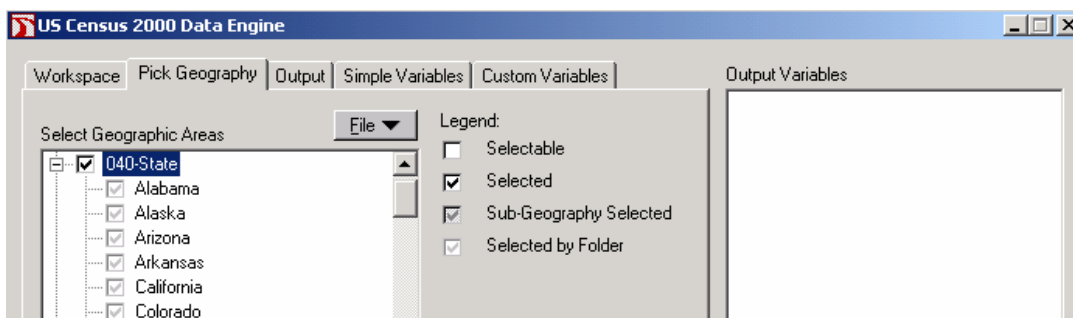
Figure 4 selections are Arizona, California and Connecticut.

Figure 4
Selecting Geographies Part 2



Select the box adjacent to the geographic code to choose all areas of that type. Figure 5 shows that the user selected all states.

Figure 5
Selecting Geographies Part 3



Exercise:

Select all census tracts in Erie County.

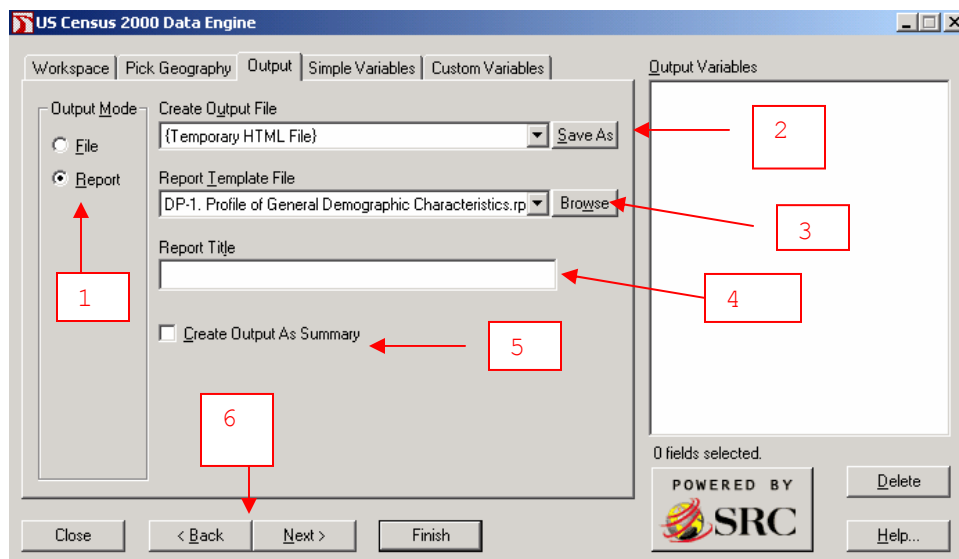
Select county subdivisions by Congressional districts for New York's 27th district.

Determining output formats

Figure 6 displays output formats.

1. Create a file or view a report.
2. View information in HTML format or enter a file name.
3. Select the table you wish to view or download. Use the drop-arrow to select from among dozens of options.
4. Enter report title.
5. Click the box to summarize output. Summarizing the output aggregates data for selected geographies. For example, figure 4 illustrates selections for three states: Arizona, California and Connecticut. Summarizing that output would provide 1 total figure for those areas rather than 3.
6. Closes the program; "Back" returns users to the geography option; and "Next" refers users to simple variables. Select "Finish" to view the table selected, "DP-1. Profile of General Demographic Characteristics."

Figure 6
Output Formats



Exercise:

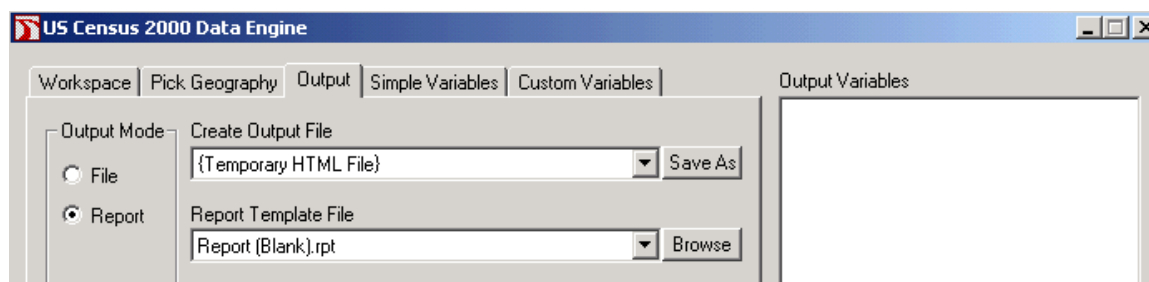
View a general demographic profile for all fifty states.

Create a quick, summary report describing households and families for all block groups in Erie County census tracts 1-5. What's missing from this table? How would you use the "Simple Variables" option to fix this? (Answer: Results list block group numbers without referencing relevant census tracts. Use Simple Variables to select "Geographic Identifiers" choose tracts, and click finish.)

Creating a table using Simple Variables

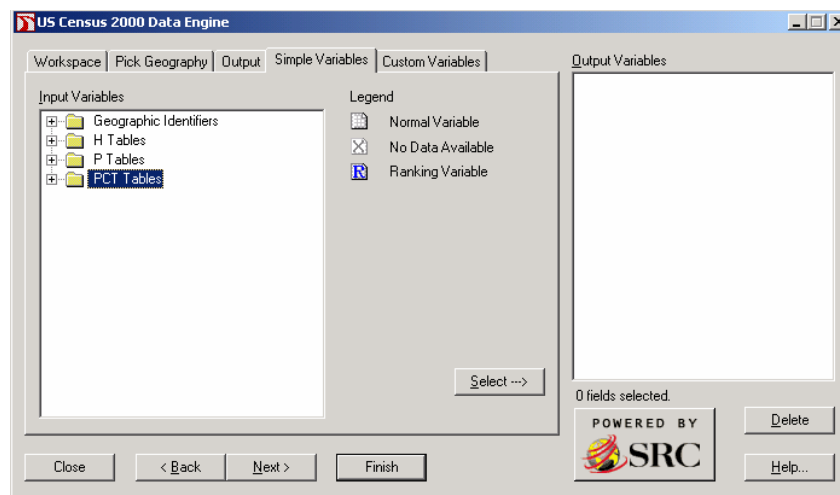
Select "Report (Blank). Rpt," the last option on the Output Report Template file. (figure 7)

Figure 7
Report (Blank). rpt



Choose "Simple Variables" to view selection choices among geographic identifiers, and housing and population variables. (figure 8)

Figure 8
Simple Variables-Part1

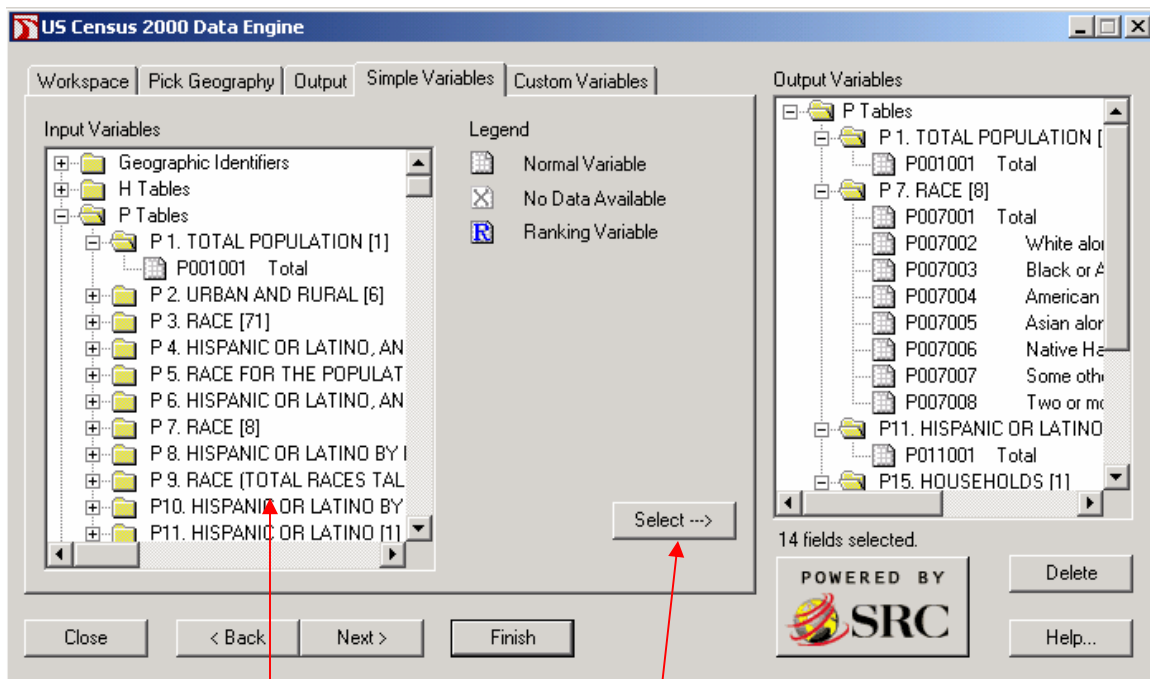


Exercise

Create a custom report measuring the following variables for New York State, Erie County, and Zip Code Tabulation Area 14215. (figure 9)

- Total population
- Race
- Hispanic population
- Number of households
- Number of families
- Children under 5
- Tenure by race

Figure 9
Simple Variables-Part1

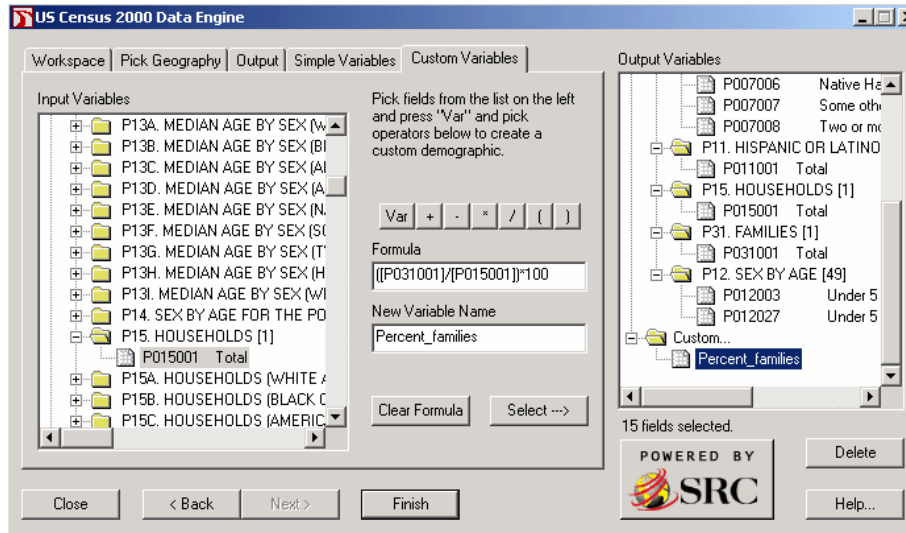


Highlight a variable and press "Select" to add information to the "Output Variables" list. Click "Finish" to view results.

Add a Custom Variable to your results

Calculate a variable that illustrates the percent of households that are families. Create a name for the new variable and click "Select" to add it to the Output Variables list. (figure 10)

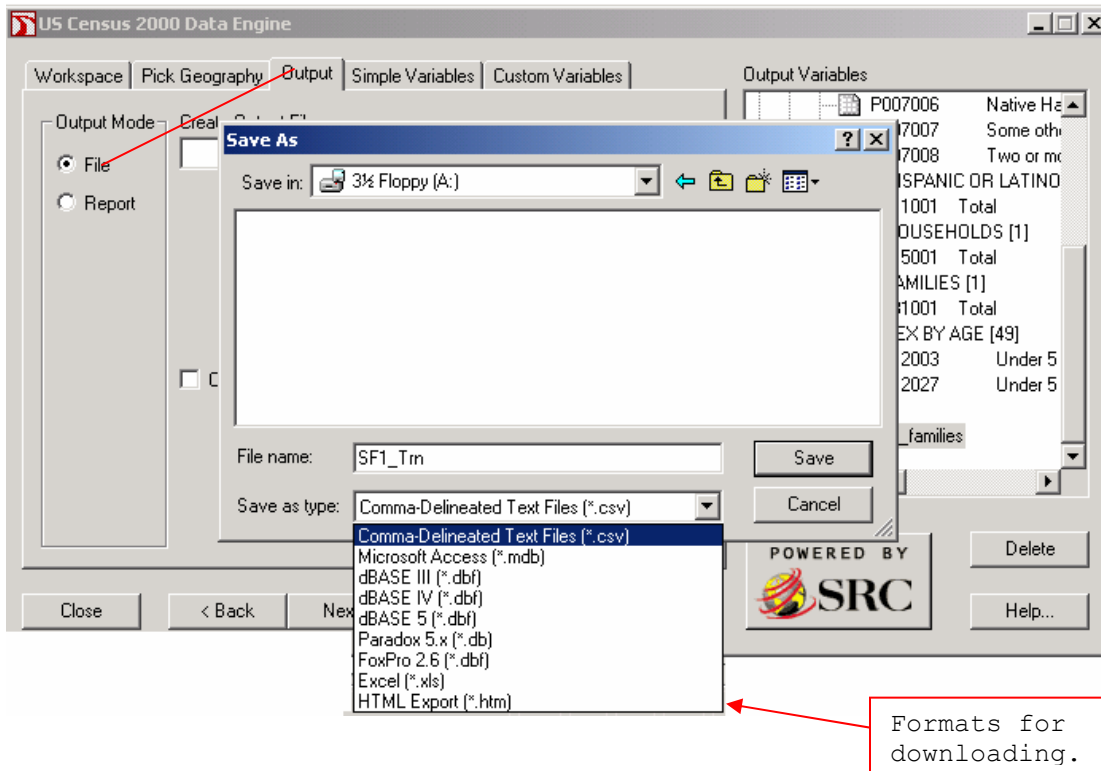
Figure 10
Custom Variables



Download results to a disk

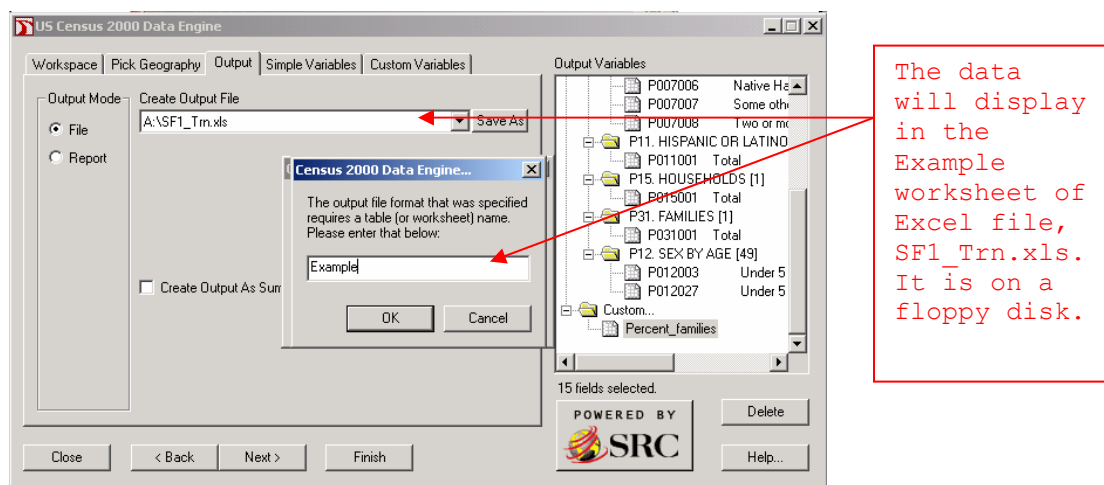
Select "Output," and "File" option. (figure 11)

Figure 11
Downloading Files



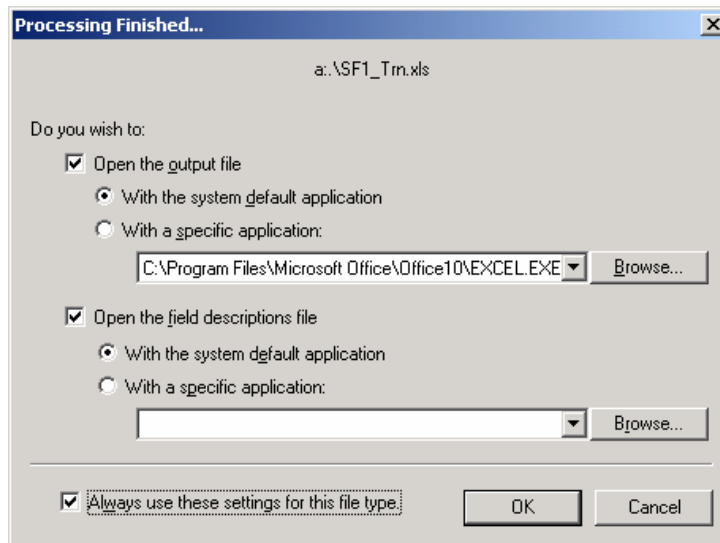
Specify a worksheet name. (figure 12)

Figure 12
Worksheet Name for Downloaded File



Prior to clicking "Finish" in figure 13, select "Open the field descriptions file."

Figure 13
Select Field Descriptions



The field descriptions in figure 14 define columns in the spreadsheet.

Figure 14
Field Descriptions File

```

"NAME", "The name of the data record or polygon"
"KEY", "The key for the data record or polygon"
"TRACT", "Geographic Identifiers 2000 Census Tract"
"BLKGRP", "Geographic Identifiers 2000 Block Group"
"P001001", "P Tables 2000 P 1. TOTAL POPULATION [1] P001001 Total"
"P007002", "P Tables 2000 P 7. RACE [8] P007002 White alone"
"P007003", "P Tables 2000 P 7. RACE [8] P007003 Black or African American alone"
"P007004", "P Tables 2000 P 7. RACE [8] P007004 American Indian and Alaska Native alone"
"P007005", "P Tables 2000 P 7. RACE [8] P007005 Asian alone"
"P007006", "P Tables 2000 P 7. RACE [8] P007006 Native Hawaiian and other Pacific Islander alone"
"P007007", "P Tables 2000 P 7. RACE [8] P007007 Some other race alone"
"P007008", "P Tables 2000 P 7. RACE [8] P007008 Two or more races"

```

Open file "STF1_Trn.xls," worksheet "Example" in Excel. (figure 13)

Figure 15
View Downloaded File

	A	B	C	D	E	F	G	H	I	J	K
1	NAME	KEY	P001001	P007001	P007002	P007003	P007004	P007005	P007006	P007007	P007008
2	New York	36	18976457	18976457	12893689	3014385	82461	1044976	8818	1341946	59
3	Erie County	36029	950265	950265	780942	123529	5755	13835	223	13499	1
4	14215 5-Digit ZCTA	3614215	44484	44484	10118	32140	121	791	16	383	
5											
6											
7											
8											
9											
10											
11											
12											
13											
14											
15											
16											
17											
18											
19											
20											
21											
22											
23											
24											
25											

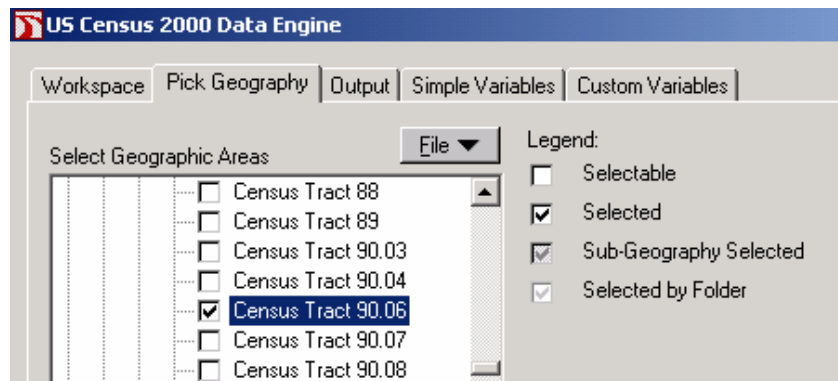
Be certain to select the
"Example" worksheet. Sheet1 is
blank.

Radius Measurement

Allocate software allows users to view statistics within indicated radii of specified points. For example, a businessperson who expects to locate his establishment in census tract 90.06 in Amherst NY would like an analysis of the surrounding area. Allocate retrieves data measuring variables within 1, 3, or 5 miles (or any other specified distances) from the geo-center of tract 90.06.

1. Select tract 90.06 from the "Pick Geography" menu. (figure 16)

Figure 16
Select Tract 90.06



2. Select blank report from among the "Output" options.
3. Select "Geographic Identifiers" in the "Simple Variables," view and choose latitude and longitude. (figure 17) Click "Finish" to show that table. (figure 18)

Figure 17
Select and Search Latitude and Longitude

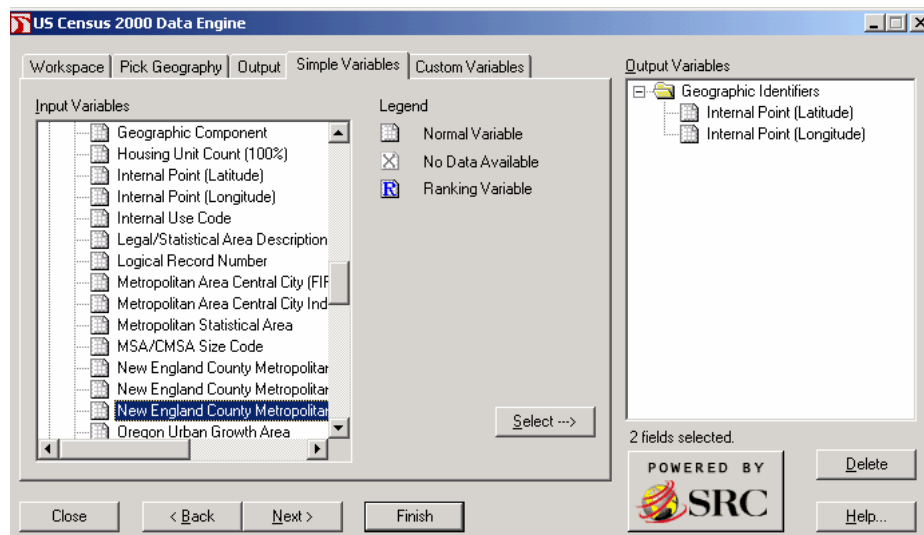


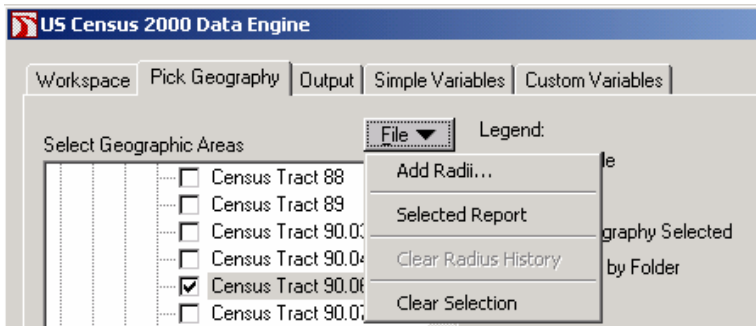
Figure 18
Latitude and Longitude Display

U.S. Census Bureau	
Custom Report [For information on confidentiality protection, nonsampling error, and definitions, see text]	
Census Tract 90.06	
Geographic Identifiers 2000	
Internal Point (Latitude)	42.986308
Internal Point (Longitude)	-78.717000

Source: U.S. Bureau of the Census, Census 2000 Summary File 1

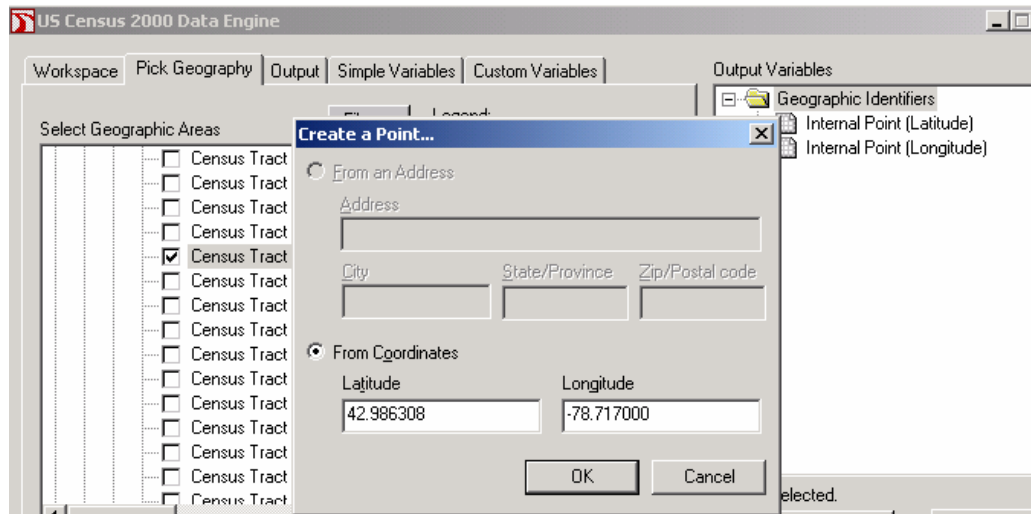
- Use the "Pick Geographies" option to select "File" and "Add Radii." (figure 19)

Figure 19
Add Radii



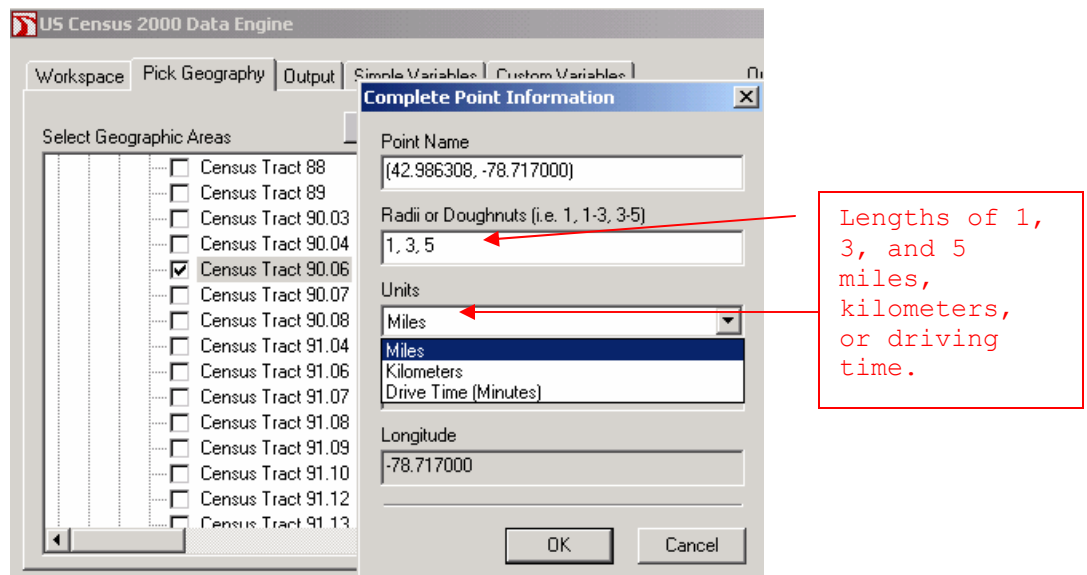
- Cut and past the latitude and longitude from figure 18 into the relevant boxes, and click "OK." (figure 20)

Figure 20
Enter Latitude and Longitude to View Radii Data



6. Indicate the length of the radii you would like to see and their units of value. (figure 21) Click "OK."

Figure 21
Length of Radii and Units of Value



8. Use "Simple Variables" to select data you would like to view and click "Finish."

9. Figure 22 illustrates the total population, and the numbers of households and families within 1, 3, and 5 miles of census tract 90.06.

Figure 22
1, 3, and 5 Miles From Tract 90.06

Custom Report

[For information on confidentiality protection, nonsampling error, and definitions, see text]

	Census Tract 90.06	1.0 Miles: (42.986308, -78.717000)	3.0 Miles: (42.986308, -78.717000)	5.0 Miles: (42.986308, -78.717000)
Geographic Identifiers 2000				
Internal Point (Latitude)	42.986308	42.987629	42.979008	42.971913
Internal Point (Longitude)	-78.717000	-78.718124	-78.728496	-78.734251
P Tables 2000 P 1. TOTAL POPULATION [1]				
P001001 Total	7,604	9,050	59,012	159,186
P Tables 2000 P15. HOUSEHOLDS [1]				
P015001 Total	2,984	3,828	22,760	61,374
P Tables 2000 P31. FAMILIES [1]				
P031001 Total	2,166	2,521	16,287	42,015

Source: U.S. Bureau of the Census, Census 2000 Summary File 1

Prepared by Edward Herman
 Business and Government Documents Reference Center
 Lockwood Library
 University at Buffalo
 September 2002
<http://ublib.buffalo.edu/libraries/units/lml/govdocsubj/census2000/SF1DVD.pdf>